

END OF YEAR REVIEW

2025



2025: A year of progress, partnership, and achievement – defined by innovation, hard work, and the successful delivery of impactful projects.



President’s Message

As I look back on this past year, I’m proud of the thoughtful way our company has continued to grow. We’ve stayed focused on what we do best – delivering exceptional work for the clients who trust us and doing it with the same care and craftsmanship that have defined Plocher Construction for decades. While we have several large projects underway, we approach every job – no matter the size – with the same level of dedication and pride.

What stands out most to me is how true we’ve remained to our roots. Many of the project types we are completing today are the same ones we built our reputation on 30 years ago – just on a larger scale. Our ability to adapt, stay nimble, and bring a wide range of skills to every challenge has once again positioned us to meet the evolving needs of our clients and industry. I’m grateful for the incredible team we have, for the strong partnerships we’ve built with our subcontractors, and for the valued clients who continue to trust us with their projects. I’m equally thankful for the communities we are fortunate to serve and contribute to through our work. Together, we’ll continue building with purpose and excellence in the year ahead.

Rachelle M. Lengermann
President, Plocher Construction

Table of Contents

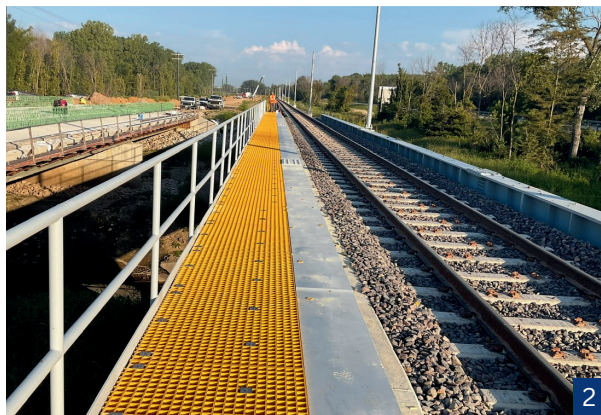
Introduction.....	02
Transportation.....	03
Utility Infrastructure.....	04 & 05
Buildings.....	06
Behind the Build & Upcoming Projects.....	07



TRANSPORTATION

1. IDOT Rte. 158 - Air Mobility Drive Extension

This project, started in June 2024, is located east of Belleville, Illinois and will extend IL 158/Air Mobility Drive to the south from IL 161 to IL 177. To date, we are nearing completion of the 5-span bridge over Loop Creek, roadway embankment and drainage structures on the new alignment, and a majority of the HMA pavement between IL 161 and IL 177. Early next year, we will construct roadway tie-ins at both intersections which include pavement widening, new drainage systems, milling and resurfacing, and traffic signal modifications. Project completion is expected in July 2026. This roadway extension will reduce congestion and increase safety on surrounding roads as well as enhancing regional mobility.



2. Metrolink Extension

This project began in May 2023 as part of MetroLink's plan to extend the light rail track from Shiloh-Scott Station to MidAmerica Airport in Mascoutah, IL. Work over the past year consisted of finishing the easterly portion of the mainline track bed and constructing the station infrastructure at the airport. The station facilities include a 200' long platform for passengers, a 250 sq ft masonry building for housing electrical and communications equipment, a PCC driveway loop for passenger pickup and drop off, and an octagon plaza waiting area. Passengers will be able to start using this new section of rail to get to MidAmerica airport by Spring 2026.

3. IDOT Bridge Replacement/Rte. 111

This project consisted of demolition of the existing Southbound IL 111 Bridge (near I-55) over Cahokia Canal, that was constructed in 1961, and replacing it with a new 3-span steel beam superstructure supported by concrete piers and abutments on pipe piles. Deck construction on this structure was challenging due to the 61 degree skew between the superstructure and substructure. The geometric complexities demanded attention to detail and precision on all aspects of construction, from rebar installation to expansion joint fabrication and setting, and ultimately to concrete pouring. The project also included miscellaneous maintenance work on the Northbound IL 111 structure involving expansion joint replacement, drainage system cleaning, and concrete sealing. We started this project in September 2024 and completed it in November 2025.

UTILITY INFRASTRUCTURE

1. Ameren Castle Bluff Energy Center

The new Castle Bluff Energy Center consists of four simple-cycle GE 7F.04 combustion turbines and four generators installed on a brownfield site near St. Louis, Missouri. Each unit is nominally rated for 200 MW. Gross output for the Facility is nominally 800 MW. The Facility is designed for cycling mode and is a fast start facility that can power up within minutes. The plant will operate on natural gas and fuel oil. The project exceeds \$1 billion overall including Ameren furnished equipment with Plocher Construction providing design, construction, and commissioning. This power plant will be operating by the end of 2027.

2. MSD Solids Management Upgrades

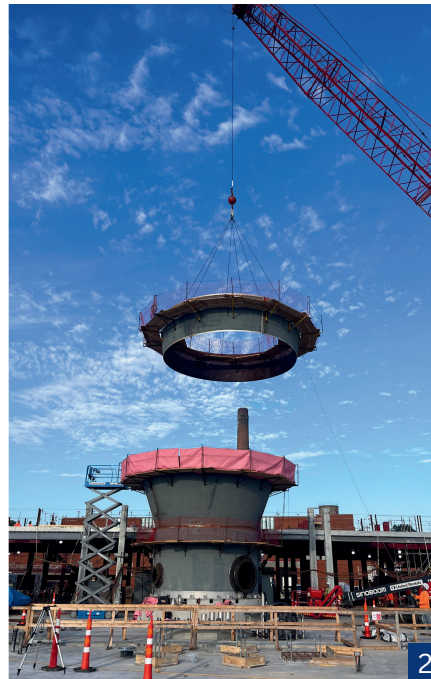
MSD Project Clear is advancing major biosolids improvements at the Lemay and Bissell Point Wastewater Treatment Plants to enhance air quality and operational efficiency across the St. Louis region. At Bissell Point, crews have completed all concrete foundations and below-slab utilities for the Solids Processing Building, poured elevated deck slabs, begun incinerator reactor erection, and advanced masonry and structural steel painting, with upcoming work including roof-level steel, remaining deck pours, equipment installation, and precast wall panels. At Lemay, deep foundations and the Broadway plant entrance are complete, structural steel erection has begun for the Solids Processing Building, and underground electrical duct banks from the substation are in progress, with next steps including finishing foundations, continued steel erection, renovations to the Grit & Screenings Building, and reactor installation. This design-build project will be complete in Spring 2029.

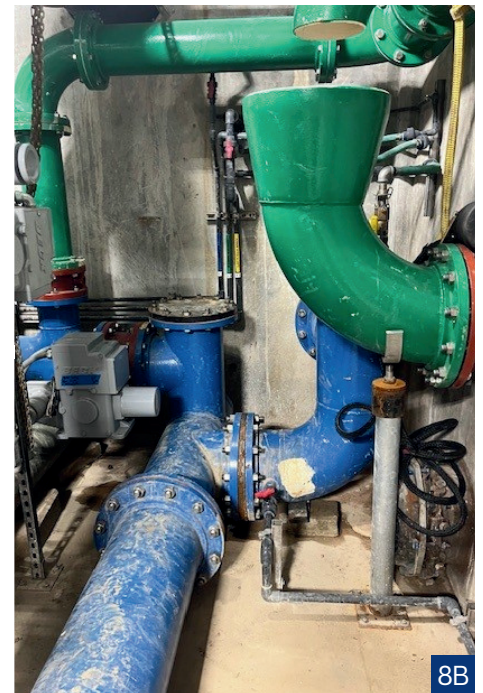
3. Ameren Whitetail Substation

This project consisted of construction of a new 138kV three-position substation in La Prairie, IL. This substation will help upgrade the grid and help facilitate future transmission upgrades. This new substation features 5,000 CY of dirt moving, 95 drilled pier foundations, three breaker positions foundations, drainage upgrades, fence installation, yard/roadway rocking, & site seeding.

4. MSD Lower Meramec WWTP Expansion

This wastewater treatment facility expansion project started in June 2022 and has been a continued effort through present day for the Metropolitan St. Louis Sewer District (MSD). This project will increase the current peak flow capacity from 60 million gallons to 100 million gallons of wastewater per day. To date this project has had its fair share of challenges, but crews have constructed a pump station, aeration basins, multiple diversion structures, odor control structures, gravity thickener, an office building expansion, and blower building. This project will be completed in early 2026.





5. Christian County Water Reclamation District WWTP Improvements

Construction on the CCWRD Wastewater Treatment Plant in Taylorville, IL continued this year, with the first phase of construction completed this fall. The new blower building and chemical feed building are constructed, the new electrical infrastructure is in place, and the aeration basin overhaul is completed with startups ongoing. Once this new process is online, removal of the old processes and secondary system upgrades can begin.

6. Hillsboro, IL WWTP

This summer, work began on a new wastewater treatment facility for the City of Hillsboro, IL. This project consists of a new headworks building, a new oxidation splitter box, two new oxidation ditches, a new sludge pump building, a new clarifier splitter box, two new secondary clarifiers, a new UV disinfection, a new post aeration system, a new electrical building, various additional site upgrades, and remodel work of their filter building to serve as their new control building.

7. Troy, MO Grit Removal Upgrades

Work began in April on the Troy, Missouri Grit Removal Upgrades project, which includes constructing a new grit removal building, installing updated process equipment, and completing significant improvements to the existing headworks, site piping, and control systems at the city's wastewater treatment plant.

8. Illinois American Water Projects:

A. Granite City WWTP Clarifier Replacements

Started in July, this project is focused on upgrading the six primary clarifiers at the Granite City WWTP. Scheduled to finish in March 2026, the project scope includes the staged removal and replacement of six 80' diameter secondary clarifier mechanisms, FRP weirs and troughs, added yard valves, and new handrails at each tank.

B. Jerseyville WTP Filter Rehab

Originally part of the main upgrade project we completed at this plant a couple years ago, we were awarded the second phase of the upgrade program earlier this year. The project scope includes the rehabilitation of the plant's four filter beds, including media replacement, underdrain upgrades, air scour addition, new PLC and automation, new gallery piping, yard piping, and new backwash systems, and is slated to be completed in February of 2026.

C. Jerseyville WWTP Phosphorus Removal

This project includes replacement and upgrades to chemical feed pump skids, new chemical feed piping, insulation, and heat trace, and new analyzers for the processes. Work began this fall and will be completed by the end of the year. This project is another example of how being brought into a project during the design phase allows for the best outcomes for the projects budget and schedule.

BUILDINGS

1. Carrollton Bank, Edwardsville, IL

Construction has started on Carrollton Bank's new 14,000 sf, three-story corporate office building, located in the heart of downtown Edwardsville, Illinois. Designed to reflect the bank's long-standing commitment to community and client service, the facility will feature modern office space, banking and customer service areas, executive meeting rooms, and open networking spaces that foster collaboration and accessibility.



2. Victory Men's Health, Glen Carbon, IL

A new 10,000 sf single-story facility is taking shape in Glen Carbon, Illinois, as the future corporate headquarters for Victory Men's Health. Designed to reflect the company's mission of promoting vitality and wellness, the modern building will feature a blend of clinical and lifestyle spaces, including exam and treatment rooms, IV therapy suites, and a fully equipped fitness and training area to support client programs. The facility will also include administrative offices, a podcast studio for educational and outreach initiatives, and dedicated spaces for staff collaboration and patient consultation.



3. Park North Golf Club

Our work at Park North Golf Club reached completion this year with a summer grand opening. This 12-acre golf complex consists of a two-level climate-controlled driving range, which utilizes TrackMan technology, an 18-hole championship-style putting course, and a full-service restaurant and bar. With the opening of this facility, the new extension of Sports Park Drive also opened, which connects Plummer Family Sports Park to IL Rte. 143 to allow for a safer and less congested way to enter the park.



4. Prairie Farms Headquarters Phase II

Ten years after completing the original Prairie Farms headquarters, construction began on the second phase of the expansion in Edwardsville, Illinois. The new three-story, 40,000 sf sister building will complement the existing facility in both design and functionality, creating a cohesive corporate environment. This phase will feature a state-of-the-art 200-person training and presentation center, expanded office and collaboration spaces, and multiple conference and networking areas to support the company's continued growth. A second-story sky bridge will link the new structure to the existing headquarters, allowing seamless movement between the two buildings and enhancing operational efficiency.



5. JJK Campus & Innovation Center

This design-build project, located in E. St. Louis, consists of a new turf football field, two new sod football fields, a turf softball field, a sod softball field, revitalization of an existing baseball field, a new soccer mini-pitch, a large and innovative grow space (which includes a pressurized greenhouse, two new hoop houses, and lots of outdoor garden planting beds and spaces), parking lots and sidewalks throughout the campus, and a 26,000 sf Innovation Center Building. The Innovation Center itself is comprised of conference rooms, office spaces, an atrium, 5 classrooms, a science lab, a learning kitchen, a media room, an engineering lab, and multiple open concept collaborative learning spaces throughout the building.





BEHIND THE BUILD

0.61 - Current EMR

27,000 pounds - Heaviest Lift of the Year

315,000 - Self-Perform Manhours

220,000 linear feet - Piles Driven

**Roughly the distance from Highland, IL to Chesterfield, MO*

70,000 cubic yards - Concrete Poured

**Equivalent to roughly 7,000 fully loaded concrete trucks*

90 feet - Deepest Excavation Performed

**Equivalent to the height of a nine-story hotel*

800 - Drilled Pier Foundations

15 - Pieces of New Equipment Purchased

70+ - Charity/Community Events Supported

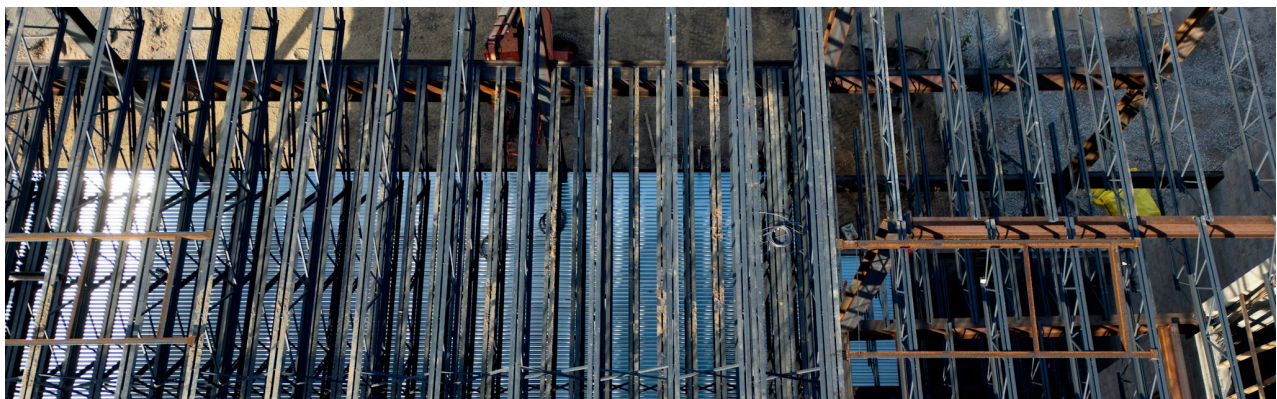
30 years - Dale Krump's dedicated service to Plocher

32 units - Blood Collected at Annual Blood Drive

24 - Repeat Clients Served

UPCOMING PROJECTS

- Oaxaca Chesterfield
- Ameren LRTP Program
- Steve Schmitt Garage Addition
- The Retina Institute, Glen Carbon, IL
- Ameren Mt. Vernon Transmission Line
- Jimmy John's - Glen Carbon & Bethalto, IL
- Illinois American Water Cottage Hills Office
- MidAmerica Plastic Surgery Remodel/Addition
- Nectar Avenue Residential Development, E. St. Louis
- SDD Final Clarifiers & Aeration Tanks Gate Upgrades



PLOCHER
construction
— Constructing Your Vision

2808 THOLE PLOCHER ROAD
HIGHLAND, IL 62249
618.654.9408
PLOCHERCO.COM