

PLOCHER CONSTRUCTION

INSIDE THIS ISSUE:

<i>Ameren Power & Transmission</i>	2
<i>Filter Addition—CWLP</i>	2
<i>161 Bridge Replacement</i>	3
<i>Orthodontic & Pediatric Dentist Office</i>	3
<i>Metropolitan St. Louis Sewer District Projects</i>	3
<i>Company News</i>	4
<i>Completed & Ongoing Projects</i>	4

RECORD YEAR FOR THE PLOCHER TEAM

2019 was a record year for the Plocher team with best in class safety performance coupled with record revenues exceeding \$130MM.

Project highlights included significant progress on our largest private development project to date, the \$55MM Parkway project. Our strong pipeline of IDOT projects continued with the completion of the Route 161 bridge replacement outside of Centralia, Illinois and we continued our ongoing success with key clients, Ameren and MSD among many other repeat and new clients.

We are excited about the future of our business as the market for our unique construction services is better than any time in recent memory. Our proudest accomplishment continues to be our fantastic safety performance with no recordables or lost time incidents. The safety of our Plocher family and project partners will continue to be our number one priority.

ON THE PARKWAY

Edwardsville’s cutting-edge premier dining, shopping, and social destination, known as *The Parkway*, is progressing well. The Parkway boasts to be one of the largest mixed-use communities in the Metro East. Kloss Furniture was the first building on-site to open in May. Construction of two strip centers are following and will house additional retailers and restaurants. The shell for the first strip center at 10,000 SF was completed this summer with the first business, Doc’s Smokehouse, to open their doors in November 2019. Both strip centers are slated to be completed by the end of the year. The estimated cost for the entire development exceeds \$55MM.

The residential facet of the development, Trace on the Parkway, brings residents a sophisticated luxury lifestyle that offers the residents living quarters unique to their lifestyle as well as shared common spaces that are considered “true resort style living.” Three residential buildings will accommodate the 184 apartments within the community. This one-of-a-kind development is now offering a sneak peak of the apartments by scheduling a tour of the completed model units. To schedule a tour, please visit their website: <https://traceedwardsville.com/>



AMEREN POWER & TRANSMISSION



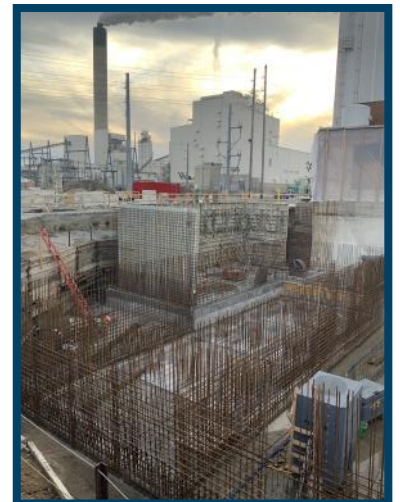
Plocher's largest project in 2019 for the new Ameren Sioux CCR/ELG systems is moving along swiftly. The weather has been a challenge to say the least, but despite a 6 week flood delay earlier in the summer, the schedule has been recovered, and all of the below grade civil work on site has been completed. The wastewater and ash handling structures are being erected, and equipment is being installed. We are on target to turn over the first of the new CCR waste handling systems by the end of the year. Throughout the next year, crews will be working toward completing the remaining ash handling systems and water treatment plant to support the plant's turnover and commissioning dates in the fall of 2020.

The Ameren transmission fall outage season was the company's busiest time for construction in 2019. Throughout the months of September and October, Plocher had 6 transmission line foundation projects and 4 substation projects all going on at the same time. Our transmission & distribution work has a healthy outlook for 2020 with Plocher starting the Beehive substation in Dupu, IL, and transmission line segments in Coulterville, IL, and West Alton, Missouri.



FILTER ADDITION—CITY WATER, LIGHT & POWER (CWLP)

Our crew is back in Springfield for another project with City Water, Light & Power (CWLP). The Water Purification Plant currently has twelve filters in operation. Our scope is to update the existing twelve filters and install four additional filters, including pipe gallery, new electrical and instrumentation areas, and a filter building structure. These filters serve as the final step in the water treatment process whereby the smallest particles are removed from the water before being distributed to the customers. By adding four new filters to the plant, CWLP's capacity will increase to 57 million gallons per day. Project cost is \$13.6MM.



STATE ROUTE 161 BRIDGE REPLACEMENT

Reconstruction of an aged 80 year old bridge commenced in January. The bridge grade was elevated and improvements were made to the shoulders to provide flood protection for the roadway. A large box culvert was added to the west of the bridge as a means of regulating frequent flooding in and around the area. Heavy rains this past Spring posed challenges for the Plocher team to maintain a completion date of 12/1/19. The crew ultimately moved to a six day work week to keep the schedule on track. Project cost totaled \$12.7MM.



BAUERHITE ORTHODONTIC & SOUTHERN ILLINOIS PEDIATRIC DENTISTRY

Design-build of a 10,000 sf wood framed building for an orthodontic office and pediatric dentist office was completed in July. There is a common space between the two entities. Exterior features include an array of colors for the brick and stone as well as heavy timber accents. Each firm has it's own unique layout and finishes that catered to their typical clientele. Project cost totaled \$2.6MM.



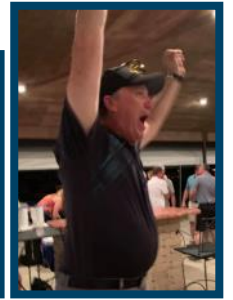
METROPOLITAN ST. LOUIS SEWER DISTRICT PROJECTS

- * Grand Glaize Switchgear Replacement —\$5.3MM: Project is almost complete as we wrap up the last few remaining items on the punch list. Our scope consisted of the replacement of six Motor Control Centers, upgrading Instrumentation and Control Systems throughout the plant, and upgrading the Return Sludge Pumps.
- * Gravois Trunk Sanitary Storage Facility—\$24.8MM: Construction of two 4.0 million gallon wire-wound, pre-stressed tanks to prevent sewage backups during heavy rainfall. The new tanks will divert the sewage into the storage tanks during rain events. The sewage would then be released later into the sewer system for treatment at MSD’s Lemay WWTP, a plant that Plocher completed \$13.5MM worth of work at in 2016.
- * Bissel Point Wastewater Treatment Redundant Sludge Acceptance System—\$3.2MM: Demolition activities commenced in the Spring to make way for a new sludge handling structure at the Bissel Plant. Electrical relocations were recently completed to allow for concrete work to begin on the superstructure. Project is slated to be complete by Summer 2020.



Company News

The company held our first golf scramble coupled with a casino night in October with over 140 people in attendance. Due to our large volume of work and the need to continuously infuse new talent into the Plocher team and family, Plocher's new apprentice workforce of carpenters, laborers, operators, and cement masons grew by upwards of 20 individuals in 2019.



Highland WR



Additional Completed & Ongoing Projects:

- * Madison County Jail Renovations—\$12.7MM
- * South Beardstown Pump Station—\$4.7MM
- * Maryville Christian School High School Addition—\$14.9MM
- * St. Louis Bank Renovation (Edwardsville & St. Louis) - \$1MM
- * Highland Water Reclamation Facility Improvements—\$10MM
- * Decatur West Headworks Improvements—\$10.8MM
- * Schlott Oral Surgery Remodel—\$700K
- * American Water Alton UV Upgrades—\$3.1MM
- * IDOT Effingham Co. Bridge—\$3.2MM
- * FCB Operations Center—\$1.6MM
- * Troy Missouri WWTF—\$18MM
- * Beelman Quarry Upgrades—\$1MM
- * Litchfield Weigh Station—\$2.1MM

Imo's Pizza



St. Louis Bank—Edwardsville



Beardstown PS



Maryville HS Addition



Decatur Headworks



Ralls Co. WTP



PLOCHER
construction
 Constructing Your Vision
 618.654.9408
plocherco.com

*A reputation for
 DEDICATED EMPLOYEES
 and the ability to meet their clients'
 EXACTING SPECIFICATIONS.*